

RIVER THAMES

PURFLEET

Skeleton mini plots showing significant soundings and contours taken from larger scale Periodic surveys of dates shown. The contours are of the nominal depths for the areas Purfleet 8.0m
Vopak/Stoneness 8.4m
Broadness 8.6m

Soundings in Metres & Tenths below local PLA datum

SCALE 1:20000

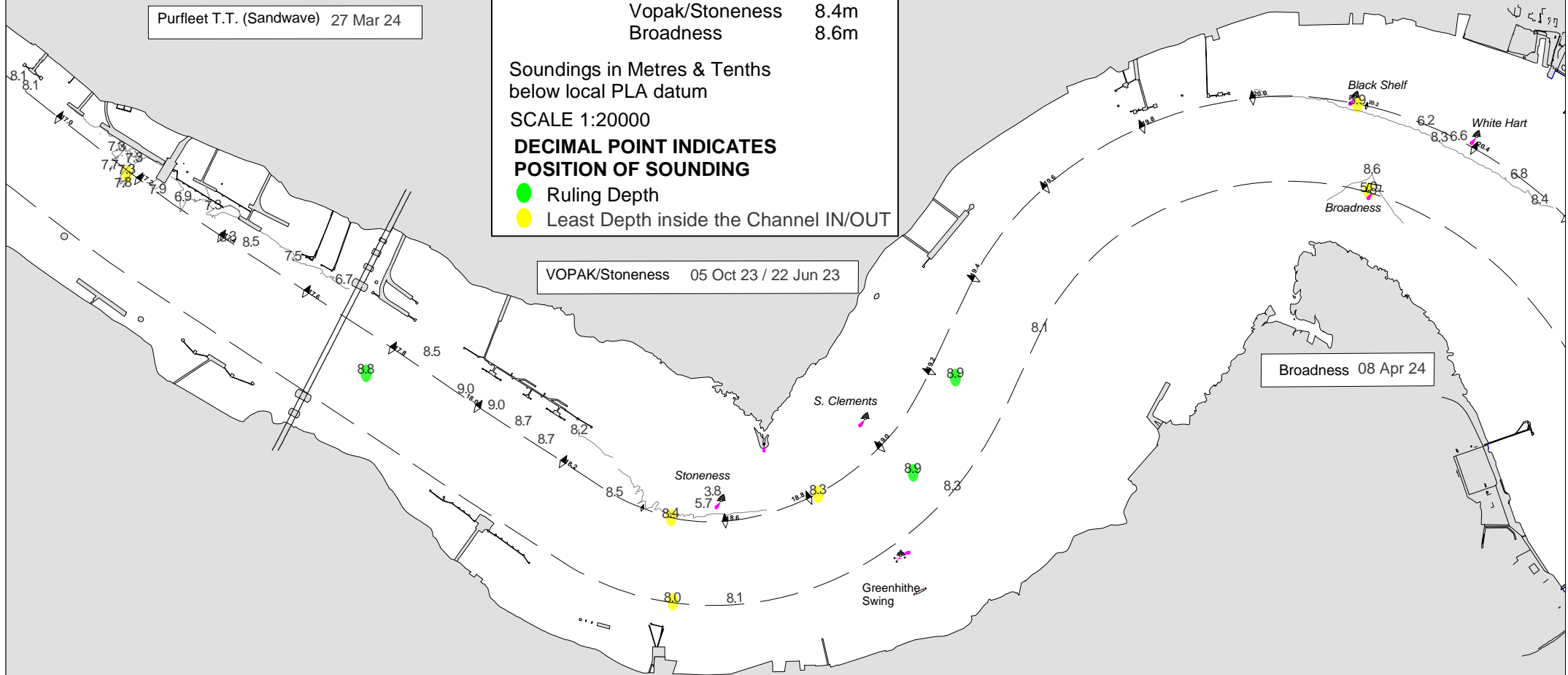
DECIMAL POINT INDICATES POSITION OF SOUNDING

- Ruling Depth
- Least Depth inside the Channel IN/OUT

Purfleet T.T. (Sandwave) 27 Mar 24

VOPAK/Stoneness 05 Oct 23 / 22 Jun 23

Broadness 08 Apr 24



Soundings in the channel in Hydrographic notation are taken from the appropriate PLA Main Survey (2021)

For Depths alongside berths- see most recent large scale berth survey.