

Thames Estuary

SUNK / LONG SAND HEAD

Skeleton mini plots showing significant soundings < 16.5m (Sunk DWR), < 14.0m (Trinity DWR) and contours 16.5m (Sunk DWR) 14.0m (Trinity DWR) taken from larger scale survey of dates shown.

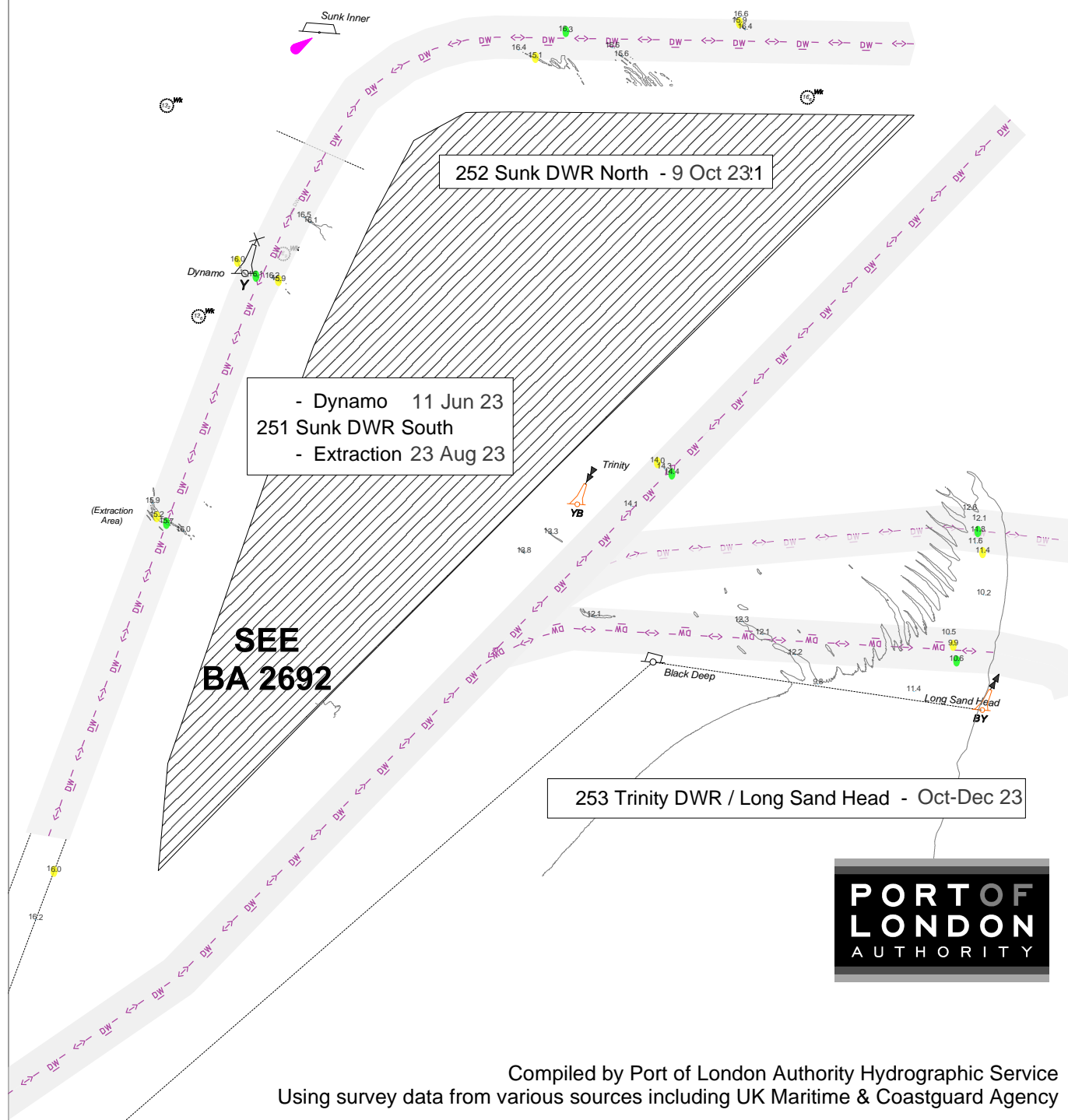
Soundings in Metres & Tenths below local PLA datum

SCALE 1:50000

DECIMAL POINT INDICATES POSITION OF SOUNDING

Outside marked fairway, depths are shown within 1 cable either side of charted deep water route.

- Ruling Depth
- Least Depth inside the Channel IN/OUT



Compiled by Port of London Authority Hydrographic Service
Using survey data from various sources including UK Maritime & Coastguard Agency