

THAMES ESTUARY

Knock John Channel

Skeleton mini plots showing significant soundings and contours taken from larger scale Periodic surveys of dates shown. The contours are of the nominal depths for the areas:

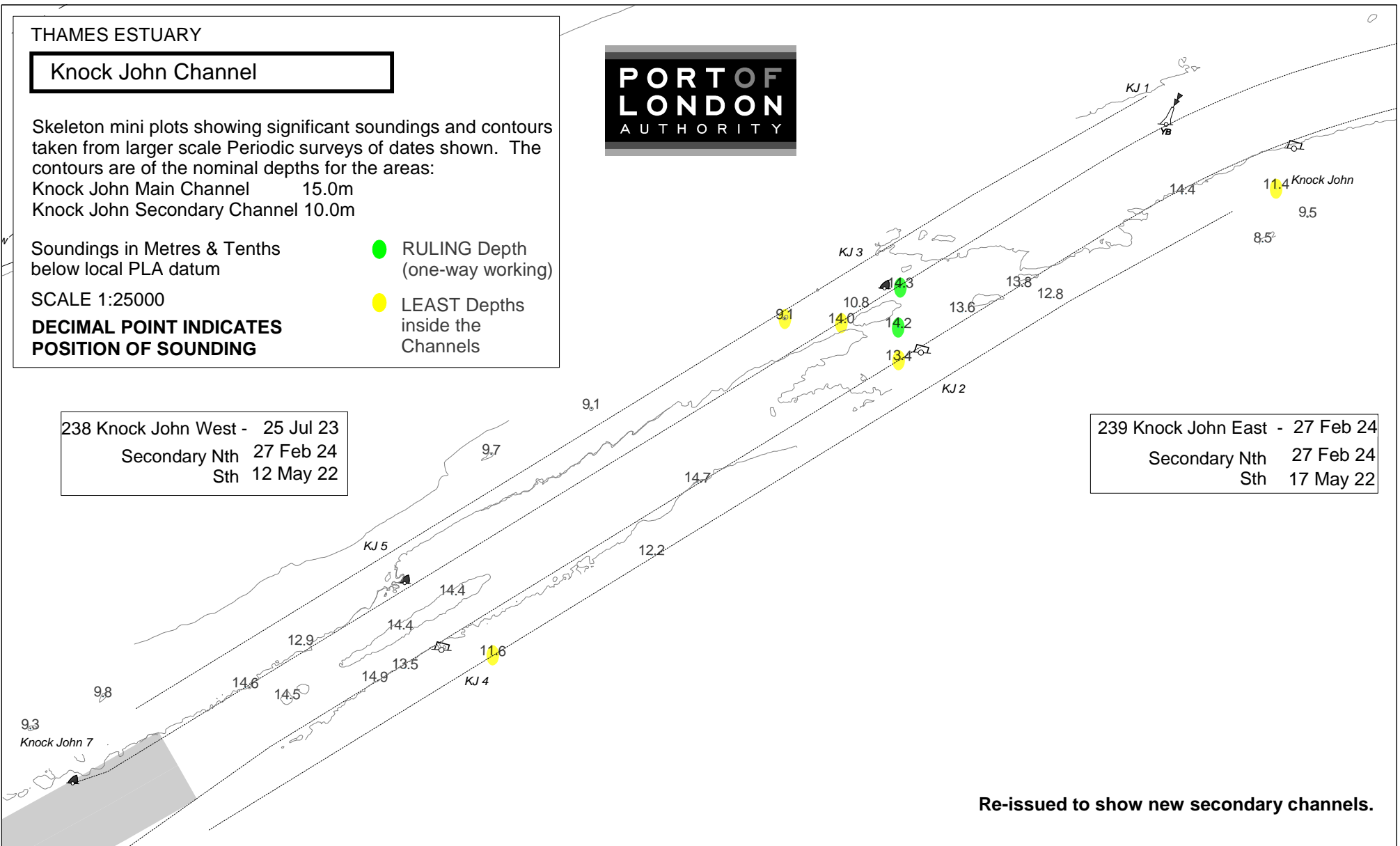
Knock John Main Channel 15.0m
 Knock John Secondary Channel 10.0m

Soundings in Metres & Tenths below local PLA datum

SCALE 1:25000

DECIMAL POINT INDICATES POSITION OF SOUNDING

- RULING Depth (one-way working)
- LEAST Depths inside the Channels



238 Knock John West - 25 Jul 23
 Secondary Nth 27 Feb 24
 Sth 12 May 22

239 Knock John East - 27 Feb 24
 Secondary Nth 27 Feb 24
 Sth 17 May 22

Re-issued to show new secondary channels.