



PORT OF LONDON
AUTHORITY

Port of London Authority
Chart Correction Advice
Date: 10/03/2023

CCA No: 2023/4



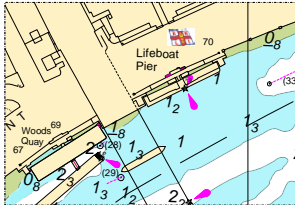
Chart: Lambeth Reach & Kings Reach

PLA Chart No. 316
HO Ref No. 113-316-178
Previous Chart Correction: 2022/8

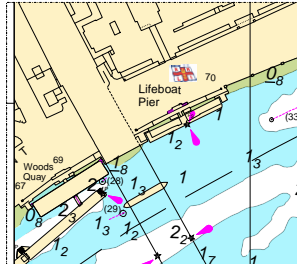
PLA Chart No. 317
HO Ref No. 113-317-130
Previous Chart Correction: 2022/7

The accompanying block corrections show:
Moorings in the vicinity of Waterloo Bridge (N)
The removal of anchor and chain below Lifeboat Pier (31)
and the partial removal of mooring chain between Woods Quay and Lifeboat Pier

PLA 316



PLA 317



For further information see the PLA hydrographic service website:

<http://www.pla.co.uk/Safety/PLA-Hydrographic-Service-Published-Surveys>