



PORT OF LONDON
AUTHORITY

Port of London Authority
Chart Correction Advice
Date: 06/12/2021

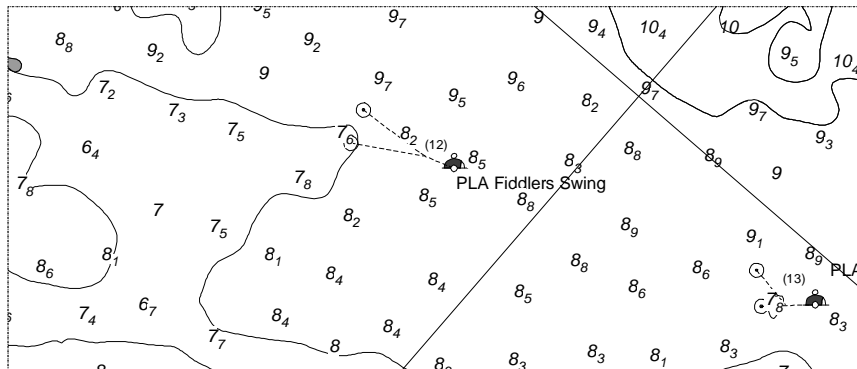
CCA No: 2021/27



Chart: St Clement's Reach

PLA Chart No. 333
HO Ref No. 113-333-097
Previous Chart Correction: 2021/7

The accompanying block correction shows:
New screw mooring installed with an unlit yellow mooring buoy in St Clement's Reach,
named 'Fiddlers Swing' and numbered (12)



For further information see the PLA hydrographic service website:

<http://www.pla.co.uk/Safety/PLA-Hydrographic-Service-Published-Surveys>