



PORT OF LONDON
AUTHORITY

Port of London Authority
Chart Correction Advice
Date: 05/07/2019

CCA No: 2019/18



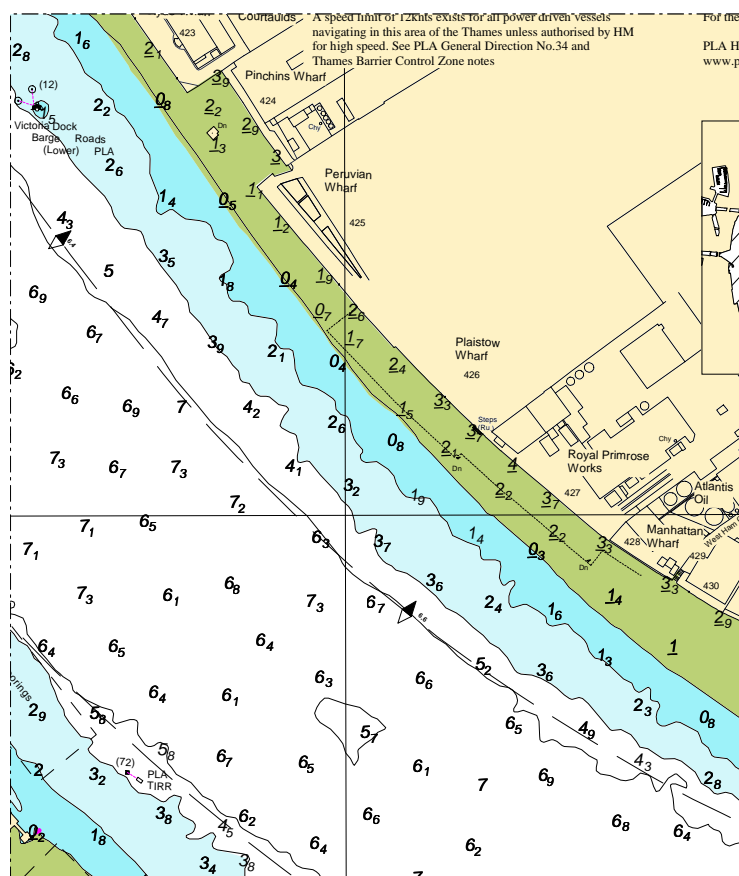
Chart: Blackwall Reach & Woolwich Reach (Upper)

PLA Chart No. 322
HO Ref No. 113-322-360
Previous Chart Correction: 2017/35

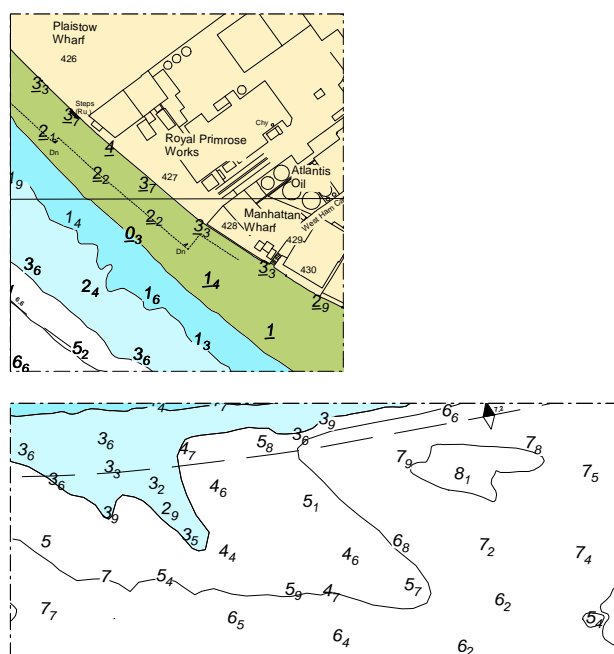
PLA Chart No. 323
HO Ref No. 113-323-301
Previous Chart Correction: 2019/15

The accompanying block correction shows:
Revised depths between Peruvian and Mohawk Wharves
Hookness Shoal and south of the Navigation Channel off Thames Barrier YC

PLA 322



PLA 323



For further information see the PLA hydrographic service website:

<http://www.pla.co.uk/Safety/PLA-Hydrographic-Service-Published-Surveys>