



PORT OF LONDON  
AUTHORITY

# Port of London Authority Chart Correction Advice Date: 20th March, 2018



**CCA No: 2018/7**

Charts: Wandsworth Reach to Battersea Reach  
Battersea Reach to Chelsea Reach  
& Nine Elms Reach

PLA Chart No. 313  
HO Ref No. 113-313-040  
Previous Chart Correction: 2017/08

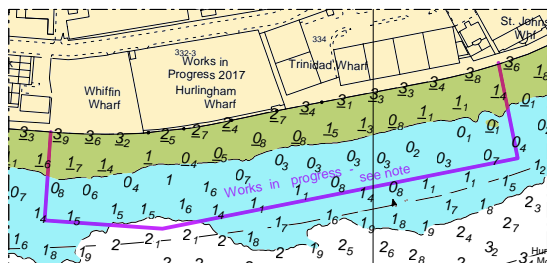
The accompanying blocks correction shows:

Restricted Areas & Works in Progress notes  
for Hurlingham Wharf, Chelsea Embankment  
and Albert Embankment

PLA Chart No. 314  
HO Ref No. 113-314-088  
Previous Chart Correction: 2018/04

PLA Chart No. 315  
HO Ref No. 113-315-050  
Previous Chart Correction: 2018/04

**Chart 313**



See PLA General Direction No. 34.

## WORKS IN PROGRESS

Construction works will be progressing in the areas indicated, various restrictions will be in place from time to time, see PLA Notices to Mariners for latest information.

## PLA PUBLICATIONS

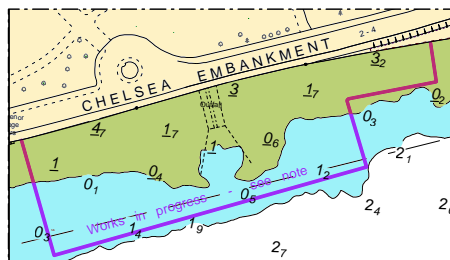
Refer to PLA Publications for further information:

1. PLA River Byelaws
2. General Directions for Navigation
3. PLA Tide Tables & Port Information
4. The River Thames Recreational Users Guide
5. Mariner's Guide to Bridges on the Tidal Thames

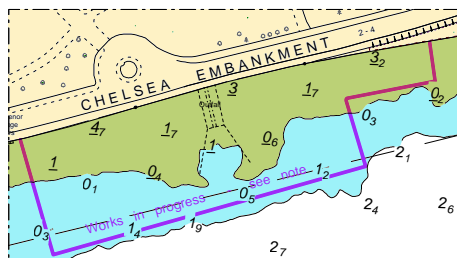
## PLA HYDROGRAPHIC SERVICE WEBSITE

[www.pla.co.uk/hydrohomepage](http://www.pla.co.uk/hydrohomepage)

**Chart 315**



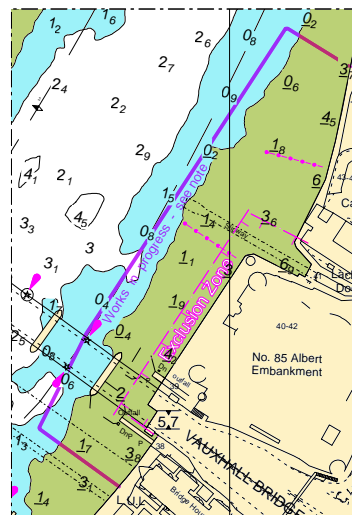
**Chart 314**



CHELSEA CREEK BRIDGE = 2.32m

## WORKS IN PROGRESS

Construction works will be progressing in the areas indicated, various restrictions will be in place from time to time, see PLA Notices to Mariners for latest information.



For further information see the PLA hydrographic service website:

<http://www.pla.co.uk/Safety/PLA-Hydrographic-Service-Published-Surveys>