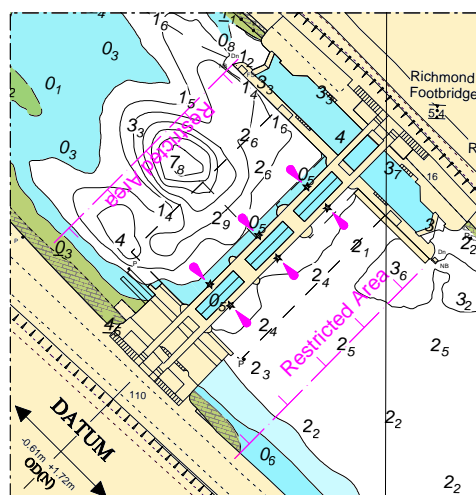


CCA No: 2018/5

Chart: RICHMOND LOCK to CHURCH
FERRY, ISLEWORTH

PLA Chart No. 304
HO Ref No. 113-304-087.
Previous Chart Correction: 2017/47

The accompanying block correction shows:
New Richmond Lock, Weir & Footbridge Restricted Area and the chart notes



DEPTHS

Depths downstream of Richmond Lock & Weir are in metres and are reduced to Chart Datum being 0.61 m & 0.76 m below Ordnance Datum (Newlyn), which is approximately the level of Lowest Astronomical Tide. Depths upstream of Richmond Lock & Weir are in metres and are reduced to Chart Datum being 1.72 m above Ordnance Datum (Newlyn), which is Maintained Water Level.

HEIGHTS

Heights are in metres. Underlined figures are drying heights above Chart Datum; all other heights are above MHWS.

SOUNDINGS

All sub-tidal areas are surveyed by MBES giving 100% coverage to IHO S44 order 1A

POSITIONS

Positions are referred to WGS 84.


TOPOGRAPHY

The shore features on this chart are based largely on Ordnance Survey digital map data with the permission of the Controller of Her Majesty's Stationery Office. © Crown Copyright 2016. All rights reserved. Ordnance Survey Licence number 100022150.

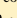
LIGHTS ON JETTIES

Light stars without legends represent two fixed lights displayed vertically. They are seen as red to port and green to starboard when proceeding upriver.

DISTANCES

Distances from London Bridge are shown along the N channel edge in Sea Miles and tenths against this symbol 

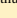
LADDERS

Permanent ladders, the exact position or condition of which cannot be guaranteed, are shown thus 

BRIDGES - Headway at the centre span above MHWS:

Richmond Footbridge = 5.4 m.

MOORINGS

Moorings are shown in their true position thus  and buoys shown as symbols.

Buoy numbers shown (20) are PLA references.

PLA REFERENCES

The numbers shown on the shore and in parenthesis in the river adjacent to moorings refer to PLA licences.

PLA PUBLICATIONS

Refer to PLA Publications for further information:

1. PLA River Byelaws
2. General Directions for Navigation
3. PLA Tide Tables & Port Information
4. The River Thames Recreational Users Guide
5. Rowing on the Tideway

RICHMOND LOCK & WEIR

Closure of weir gates and prohibition of passage through weir arches is shown by three red discs below each arch during hours of daylight and three red lights at night.

Weir gate sill is 1.3m below ODN

Crest of boat rollers is 2.1m above ODN

Lock upper sill is 1.4m below ODN

Lock lower sill is 2.0m below ODN

Lock Length 76m, width 7.9m

Headway within the lock above MHWS of 5.1m.

RESTRICTED AREA:

Mariners should not enter the Richmond Lock, Weir & Footbridge Restricted Area whilst the weirs are in the lowered position, or when they are being operated.

Only when the weir gates are fully raised and the Closed Arch signs have been removed, is it permitted to navigate into the restricted area and through Richmond Footbridge No2 or No3 arches.

Only those vessels manoeuvring on or to the Lock island berths, vessels engaged in emergency operations or smaller vessels wishing to utilise the boat rollers in No1 arch are exempt from this requirement

NOTE: The height of low water is greatly affected by fresh water flow over Teddington Weir. In drought conditions recorded levels as low as 0.49m BELOW chart datum have reduced the available depth downstream from Richmond Lock & weir during the period of low water.

PLA HYDROGRAPHIC SERVICE WEBSITE

www.pla.co.uk/hydrohomepage

Tide Details, referred to levels at RICHMOND LOCK.	Ordnance Datum	Chart Datum
Highest Recorded	5.47	6.08 (1978)
HAT	4.89	5.50
Mean High Water Springs	4.17	4.78
Mean High Water	3.67	4.28
Mean High Water Neaps	3.16	3.77
Ordnance Datum (Newlyn)	-----	0.61
Mean Low Water Neaps	-0.37	0.24 see note above
Mean Low Water Springs	-0.54	0.07 " " " "
Chart Datum	-0.61	-----

For further information see the PLA hydrographic service website:

<http://www.pla.co.uk/Safety/PLA-Hydrographic-Service-Published-Surveys>