



PORT OF LONDON
AUTHORITY

Port of London Authority
Chart Correction Advice
Date: 29th December, 2017



CCA No: 2017/44

Charts: Upper Pool &
Lower Pool to Limehouse Reach

PLA Chart No. 318
HO Ref No. 113 -318 -266
Previous Chart Correction: 2017/7

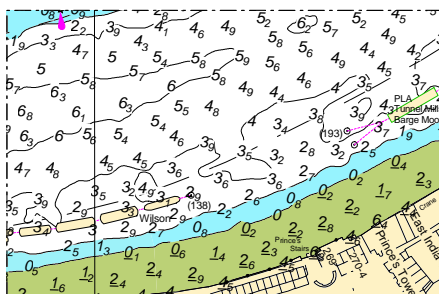
PLA Chart No. 319
HO Ref No. 113 -319 -130
Previous Chart Correction: 2017/40

The accompanying block correction shows:

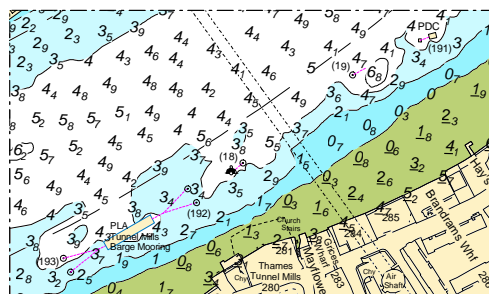
New collar barge mooring,
"PLA Tunnel Mills Barge Mooring"
with screw moorings Nos. (192) & (193)

Relocation of "Hop Hole PDC" 50m downstream
renamed "PDC" & retaining screw no (191)

318



319



For further information see the PLA hydrographic service website:

<http://www.pla.co.uk/Safety/PLA-Hydrographic-Service-Published-Surveys>