



PORT OF LONDON
AUTHORITY

Port of London Authority
Chart Correction Advice
Date: 14th September 2016

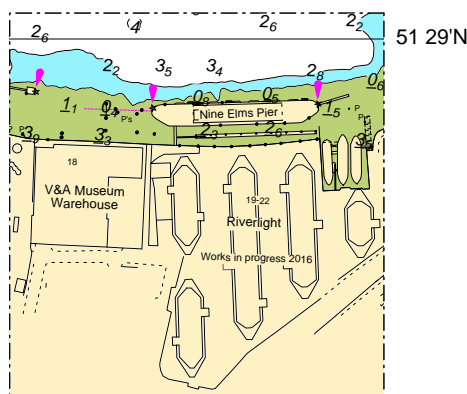


CCA No: 2016/23

Chart: Nine Elms Reach

PLA Chart No. 315
HO Ref No. 113-315-050
Previous Chart Correction: n/a

The accompanying block correction shows that the finger pontoons on the upper end of Nine Elms Pier have been removed. The associated piles remain in place as of September 2016.



For further information see the PLA hydrographic service website:

<http://www.pla.co.uk/Safety/PLA-Hydrographic-Service-Published-Surveys>