



PORT OF LONDON
AUTHORITY

Port of London Authority
Chart Correction Advice
Date: 15th January 2016

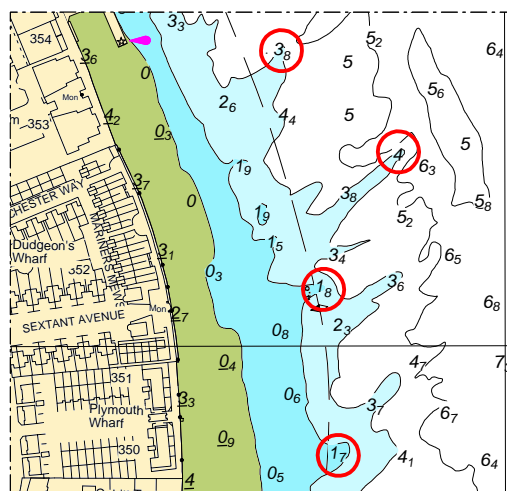
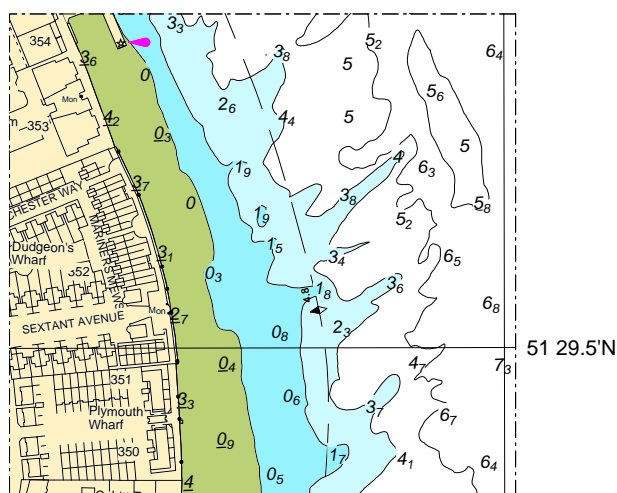


CCA No: 2016/1

Chart: Blackwall Reach

PLA Chart No. 321
HO Ref No. 113-321-190
Previous Chart Correction: New Edition Version (3)

The accompanying block correction shows shallower depths on Saundersness Shoal following the latest survey.



For further information see the PLA hydrographic service website:

<http://www.pla.co.uk/Safety/PLA-Hydrographic-Service-Published-Surveys>